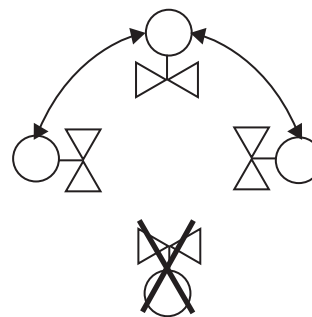
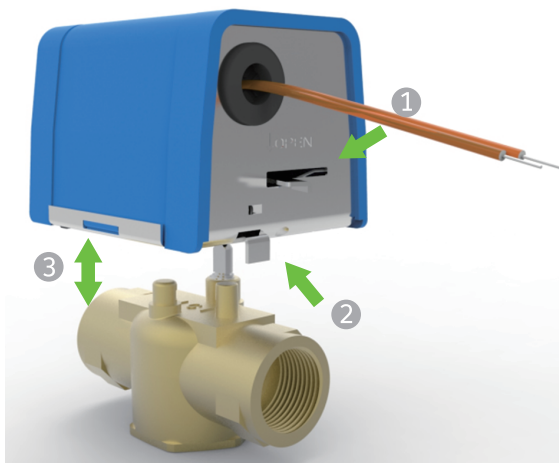
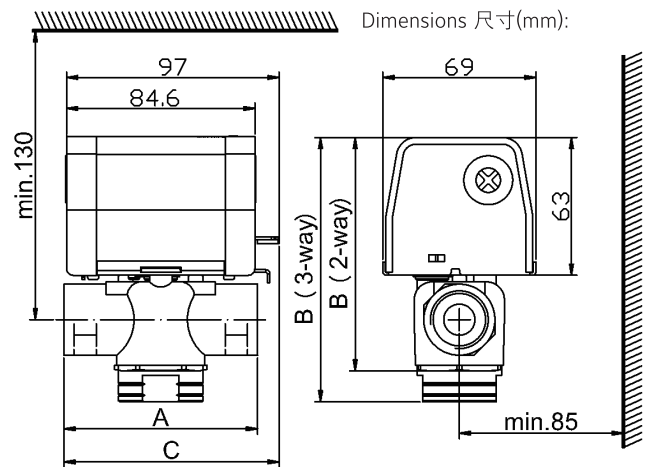




Model 型号	Size 口径	Type 规格	Kv (Cv)	Close-off pressure 关闭压力	Weight 重量 (g)	DIMENSIONS 尺寸 (mm)		
						A	B	C
VLC2200FC-C	DN15	2-way valve (二通阀)	1.7 (2.0)	0.45 MPa (65PSI)	700	70	106	91
VLC2200GC-C	DN20		2.2 (2.5)	0.35 MPa (50PSI)	850	87	106	99
VLC2200HC-C	DN25	3-way valve (三通阀)	3.0 (3.5)	0.20 MPa (30PSI)	1000	95.5	112	103
VLC2300FC-C	DN15		1.7 (2.0)	0.45 MPa (65PSI)	750	70	115	91
VLC2300GC-C	DN20		2.6 (3.0)	0.35 MPa (50PSI)	900	87	120	99
VLC2300HC-C	DN25	3.4 (4.0)	0.20 MPa (30PSI)	1050	95.5	128	103	

Medium 介质	Cooling or heating water 冷热水
Operating fluid temperature range 介质温度	0 ~ 94°C
Operating temperature range 工作环境温度	0 ~ 50°C
额定压力	PN20
Operating pressure 工作压力	300 psi / 2.0 Mpa
Rated power supply 电压	220±10%VAC, 50/60Hz
Operating time 操作时间	Valve Open < 18s Spring Return close < 8s 打开 < 18秒, 关闭 < 8秒
Action 操作	Spring Return; Normally Close 弹簧复位; 常闭.



- The flow direction is from "B" to "A", refer to figure 1.
- When installing the actuator of normal-closed valve, it must be placed in the open condition by manual operating lever.
- The manual operating lever of the actuator will move to the automatic position when the valve is operated first time.
- VLC2000 series valves are designed for the application to closed system. Use in open system is not recommended. High levels of dissolved oxygen and chlorine round in open systems may erode the valve material and result in premature failure.

- 流向是由端"B"到端"A"，见图1。
- 当安装常闭型驱动器时，必须先把手动操作杆扳到“开”处。
- 当第一次使用时，手动操作杆会转移至自动位置上。
- VLC2000 系列电动阀是为全封闭式系统设计。不建议在开放式系统使用。在开放式系统里，过多的氧气及氯气溶解会侵蚀阀体材料，形成过早的损坏。



Warning: Make sure the power is off when mounting or dismounting.
警告: 安装拆卸时请确认电源关闭。

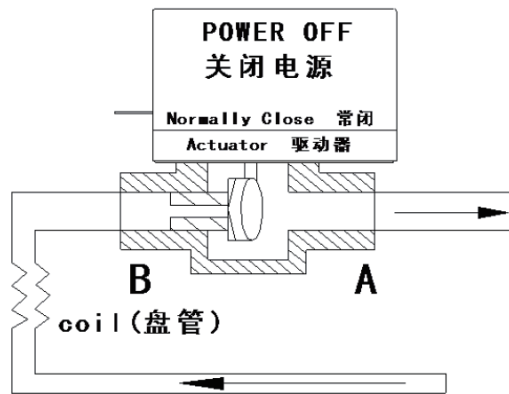


Fig. 1: 2-way Normally Closed to the Coil
 图 1: 二通阀 (常闭) 管道安装

3-way is only configured as N.C.to B port, for N.O. configuration to the coil, simply turn the valve around.
 三通只作与B口常闭布置; 若用于常开, 将阀移转180° 即可。

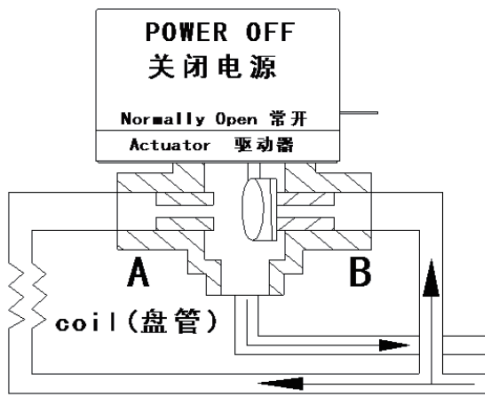


Fig. 2: 3-way valve in Mixing Configuration, Normally Open to coil
 图 2: 三通阀混合布置 (常开) 管道安装

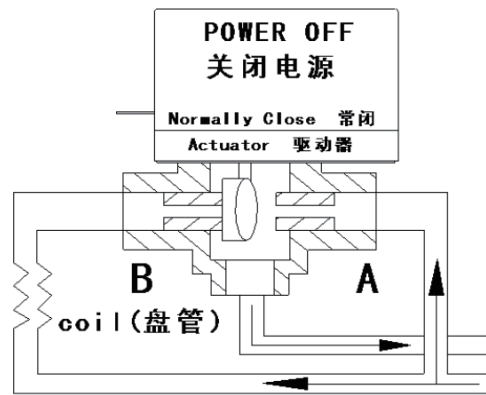


Fig. 3: 3-way valve in Mixing Configuration, Normally Closed to coil
 图 3: 三通阀混合布置 (常闭) 管道安装

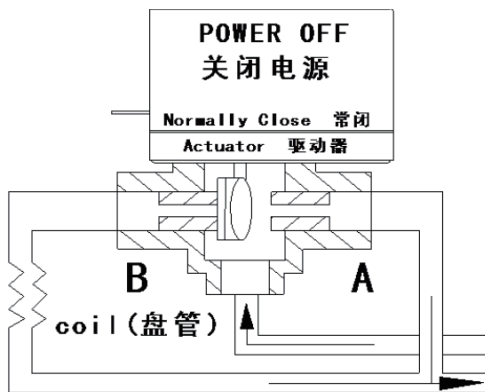


Fig. 4: 3-way valve in Diverting Configuration, Normally Closed to coil
 图 4: 三通阀分流布置 (常闭) 管道安装

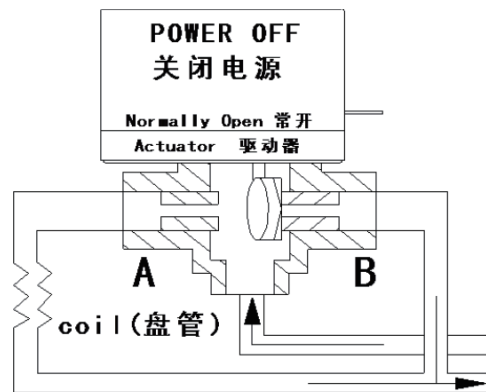


Fig. 5: 3-way valve in Diverting Configuration, Normally Open to coil
 图 5: 三通阀分流布置 (常开) 管道安装